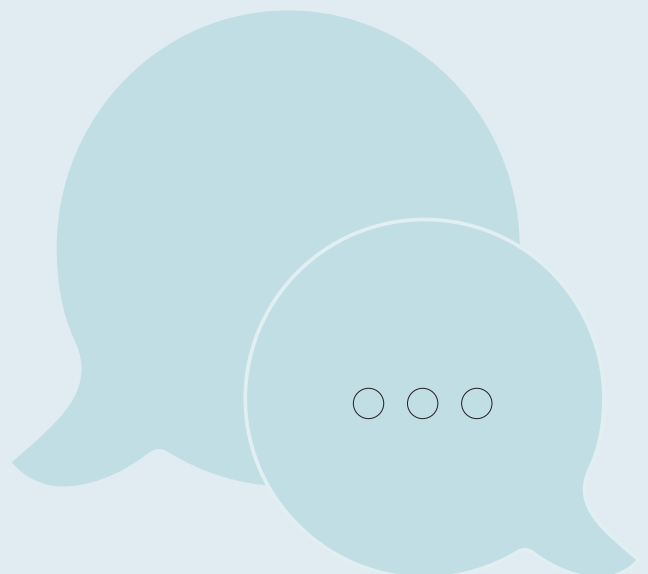
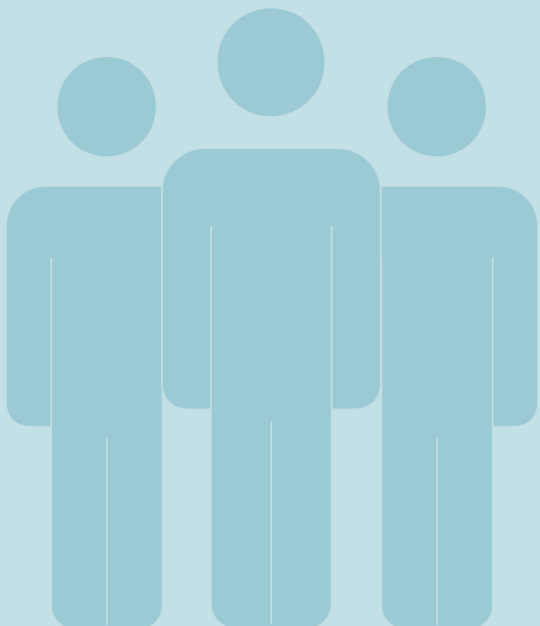


# Multidisciplinary Expert Committee on the Architectural and Urban Integration of the REM de l'Est

## BACKGROUND

Since the public launch of the project, CDPQ Infra has made a firm commitment to establish, in consultation with the relevant authorities, an Expert Committee on the Architectural and Urban Integration of the REM de l'Est, upstream of the detailed design.

This representative, multidisciplinary committee will be composed of experts from civil society and public authorities appointed by the Québec Minister of Transport. It will draw on the expertise of professionals in architecture, urban planning, urban design and landscape architecture, among other fields, as well as the support of dedicated professionals who will liaise and coordinate the Committee's work with the REM de l'Est project office.



## MANDATE

The Committee will contribute to the development of guiding principles for the future network's architectural design and urban integration, in downtown Montréal and along the entire route. Opinions directed to other relevant authorities related to urban development in proximity to the project will also be documented and recorded.

CDPQ Infra's intention is that this framework be imposed in the REM de l'Est call for tenders.

More specifically, the Committee, with the support of an architectural firm, will assist the project office in defining:

- the guiding principles of the REM de l'Est's architectural signature in downtown Montréal and along the entire route
- The guiding principles for the REM de l'Est's urban integration, downtown and along the entire route
- The principles underlying the REM de l'Est's development guidelines, downtown and along the entire route

The Committee will also address the REM's intermodality with existing active and public transportation networks, analyze scenarios to ensure the project's integration with the downtown area, and examine the project's architectural framework, among other issues.

## OPERATION OF THE COMMITTEE

All of the Committee's opinions will be included in a report that will be made public prior to the BAPE public hearings. The landscape, urban planning and architectural signature selected for the project will be unveiled by CDPQ Infra after the Committee's report is submitted.

The Committee will meet at least once per month for one half-day during the project's development phase. The Committee's secretarial tasks will be performed by an independent party and the meeting agendas will be developed by the CDPQ Infra project team in accordance with the themes approved jointly with the Committee. An architectural firm with a solid reputation in Québec and abroad will support the Committee's efforts.

The Committee will remain active throughout the project. Once its recommendations are submitted and the design is publicly unveiled, the Committee will continue to meet in order to monitor the progress of the detailed design developed by the consortium selected at the end of the RFP process.

## COMMITTEE SIZE AND COMPOSITION

The Committee will be composed of 15 members of civil society and public authorities appointed by the Québec Minister of Transport. A representative of the City of Montreal and a representative of the Government of Quebec will sit on the Committee.

Members will be drawn from a variety of disciplines to reflect a plurality of perspectives on urban and architectural integration, including but not limited to:

- Architecture
- Urbanism
- Urban art
- Heritage
- Urban development
- Engineering
- The economic environment
- Civil society
- Users
- Cultural community
- Active transportation
- City of Montréal
- Government of Québec

Committee members will be selected based on their expertise and their extensive knowledge of and commitment to the Montréal region. An internationally recognized architect will be invited to advise Committee members on international best practices.